

CNC-Lathe with Living Tools

TMM 8i



mind over metalSM

HURCO[®]

Key Data



	TMM 8i
Travels X / Z [mm]	198 / 508
Max. Turning Diameter [mm]	256
Main Spindle [kW / Nm]	13.2 / 350
Spindle Speed [min ⁻¹]	4,800
Stations	12

Content

- [Technical Data](#)
- [Clearance Conditions](#)
- [Working Dimensions](#)
- [Shipping Dimensions](#)
- [Foundation Diagram](#)

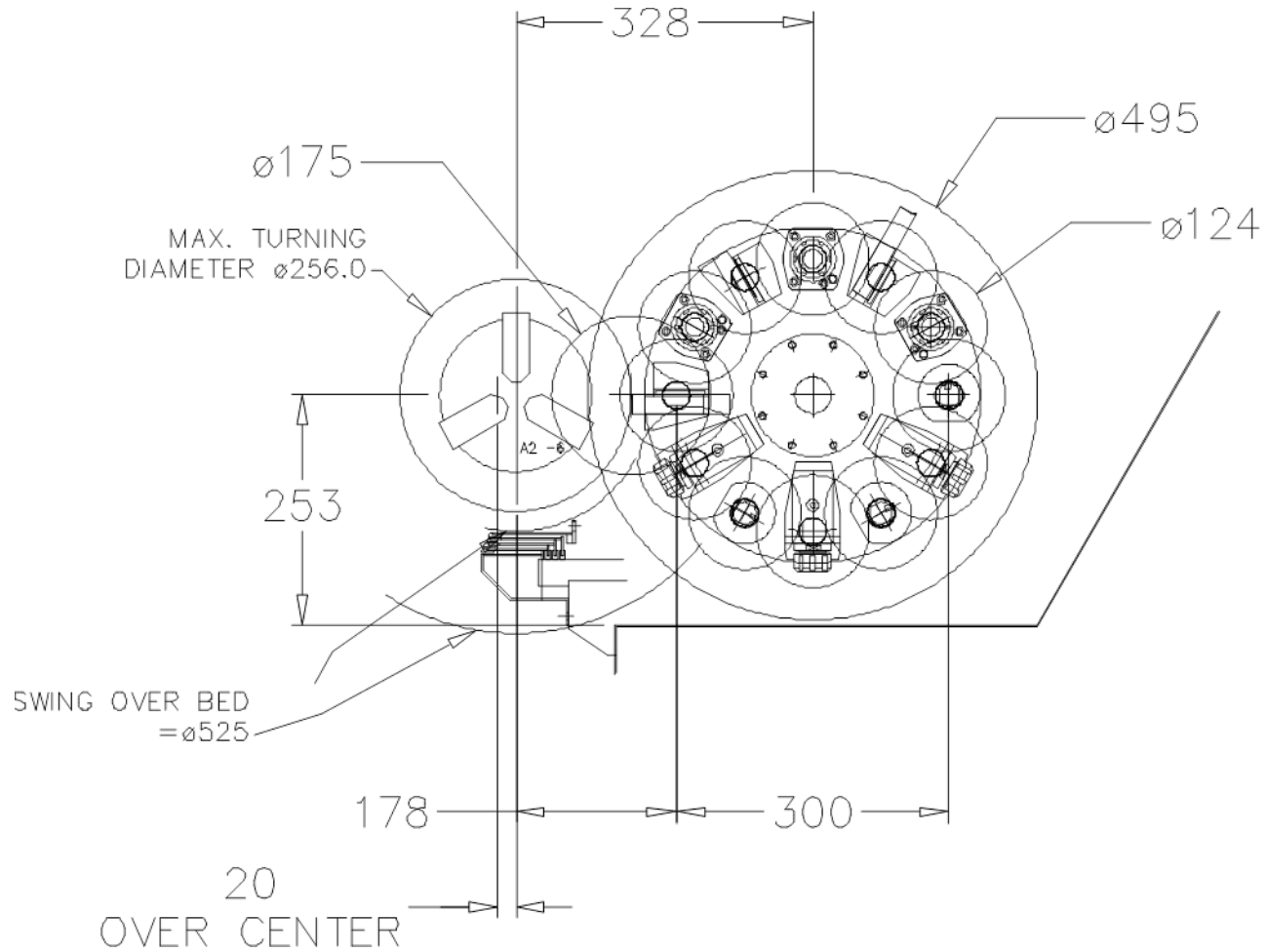
Technical Data

Machine Capacity		Feedrates	
Travels X / Z [mm]	198 / 508	Axis X / Z [m/min]	19 / 24
Max . Turning Diameter [mm]	256	Turret	
Max. Swing over Bed [mm]	525	Type	VDI 30
Over Cross Slide [mm]	300	Stations	12
Spindle		Max. Speed [min ⁻¹]	5,000
Spindle Nose	A2-6	Power max./continuous [kW]	4.44 / 2.2
Max. Speed [min ⁻¹]	4,800	Torque max./continuous [Nm]	29 / 14
Power max. / continous [kW]	13.2 / 7.5	Acceleration 0 - 5000 min ⁻¹ [sek]	0.12
Torque max / continous [Nm]	350 / 198	Deceleration 5000 – 0 min ⁻¹ [sek]	3.8
Max Bar Size [mm]	51	Index Time [sec]	0.23
Chuck Diameter [mm]	200	Max. Boring Bar Diameter [mm]	32
Acceleration 0 – 3,000 min ⁻¹ [sec]	4.8	Tool Shank Width [□ mm]	19
Deceleration 3,000 – 0 min ⁻¹ [sec]	5.0	Service Requirements/ Weight	
Collet Type (optional)	CR60A6	Electrical	31,1 kVA / 45 A / 400V
Accuracy (VDI / DGQ 3441)		Air (Dry, clean air acc. DIN/ISO 8573-1, class 4)	7bar / 150 l/min
Positioning P _{max} [mm]	0.01	Weight [kg]	4,500
Repeatability P _s [mm]	0.005		

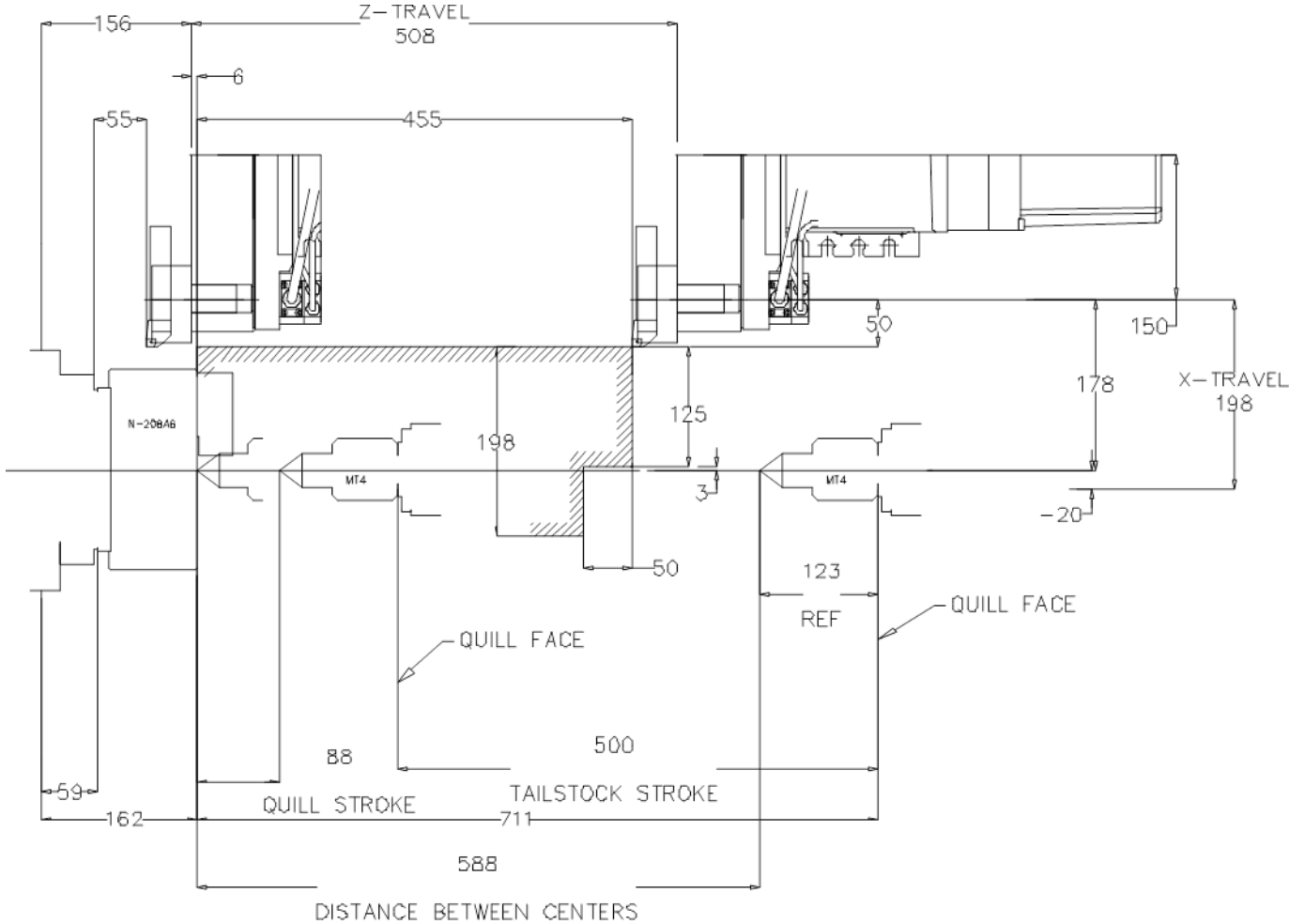
[Back To Content](#)

*due to the position of the mass center of the machine, for unloading by forklift it is recommended to plan with a higher carrying capacity of 30%

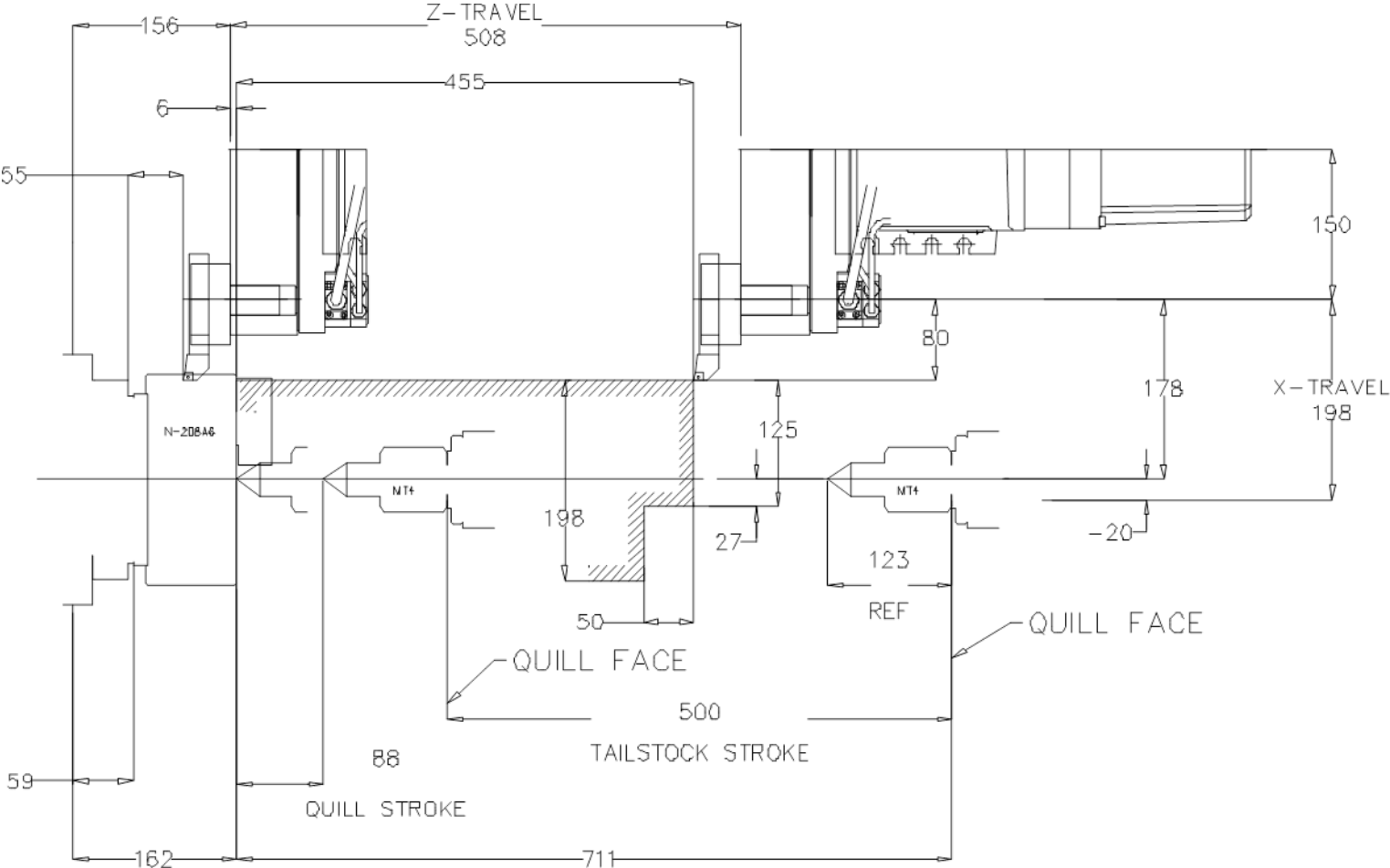
Clearance Conditions



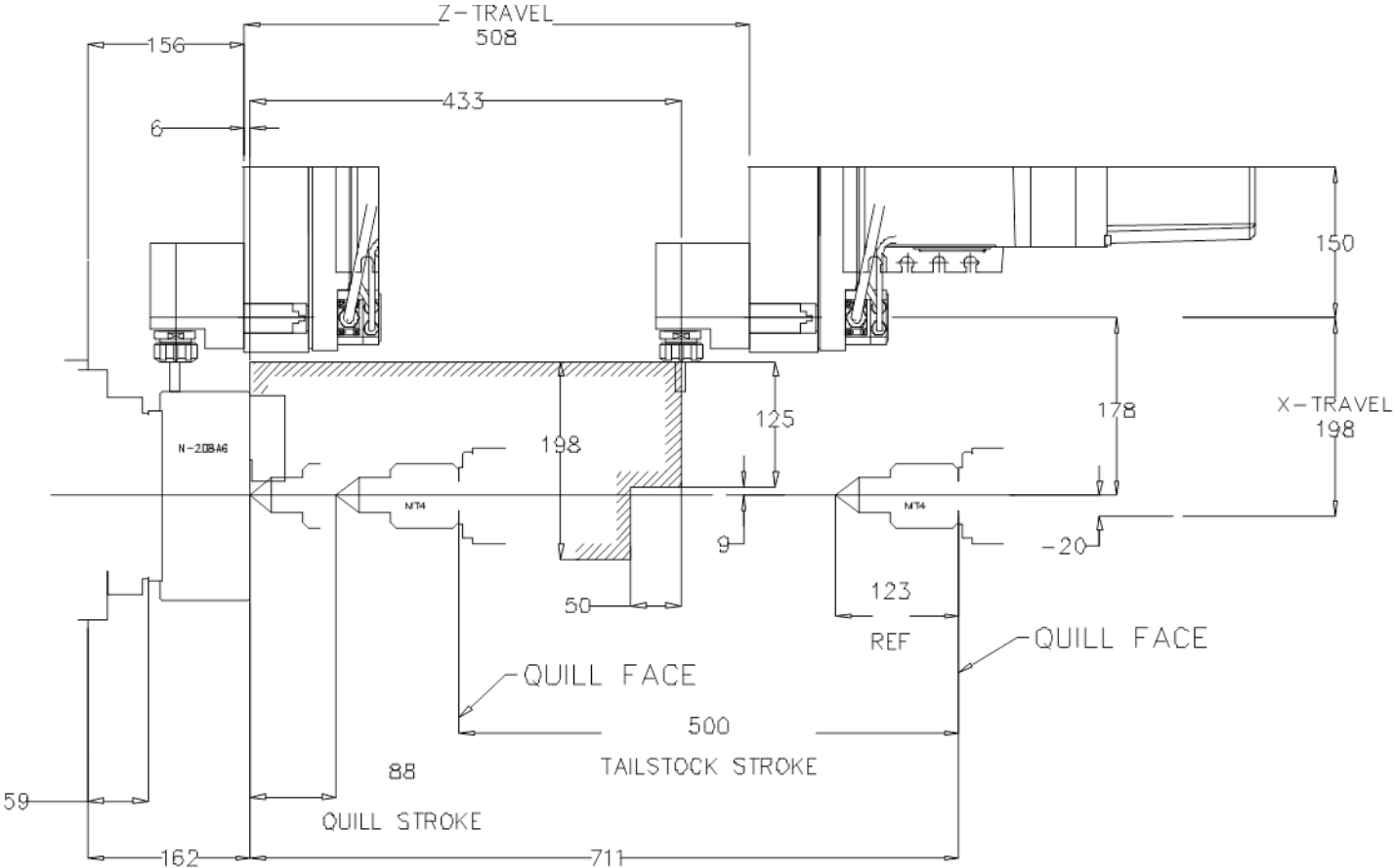
Clearance Conditions



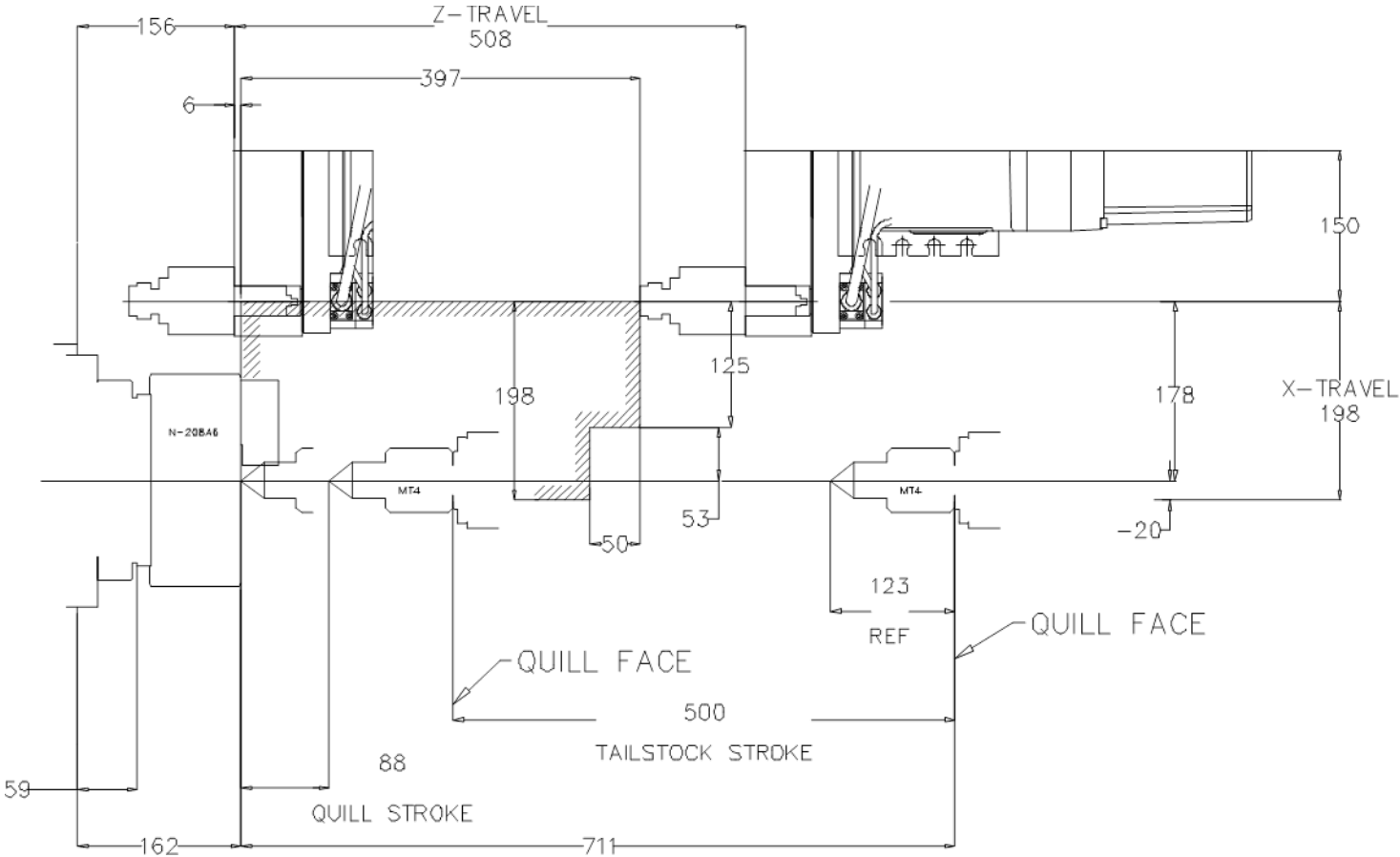
Clearance Conditions



Clearance Conditions

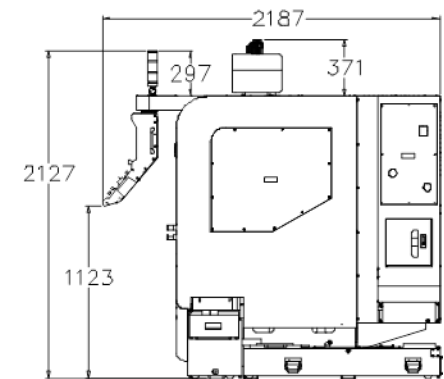
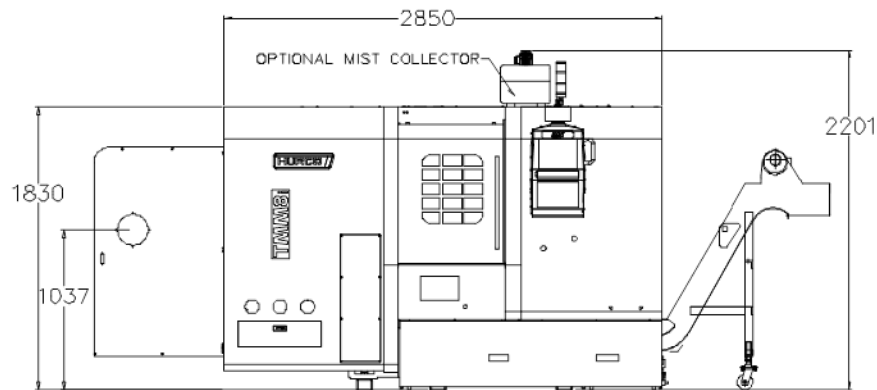
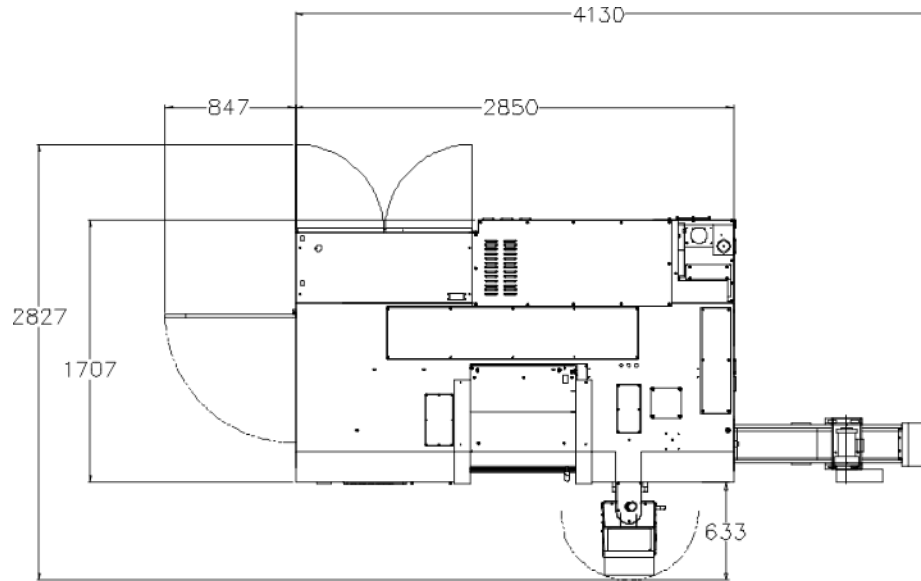


Clearance Conditions



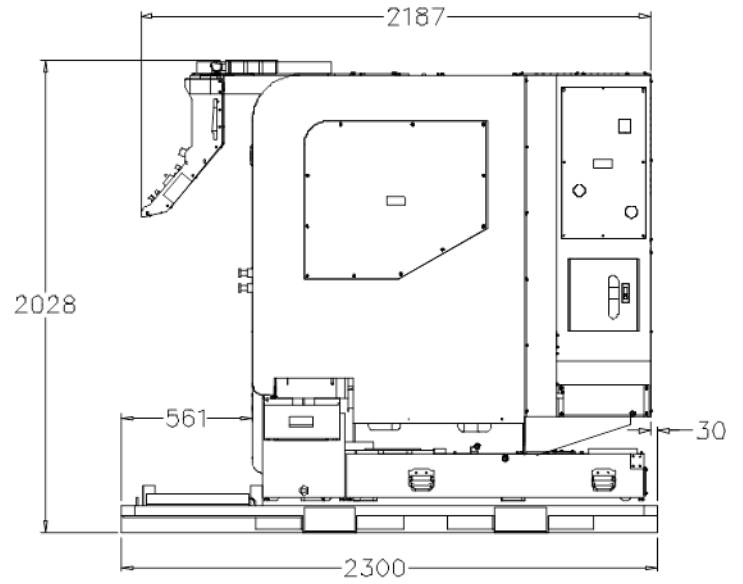
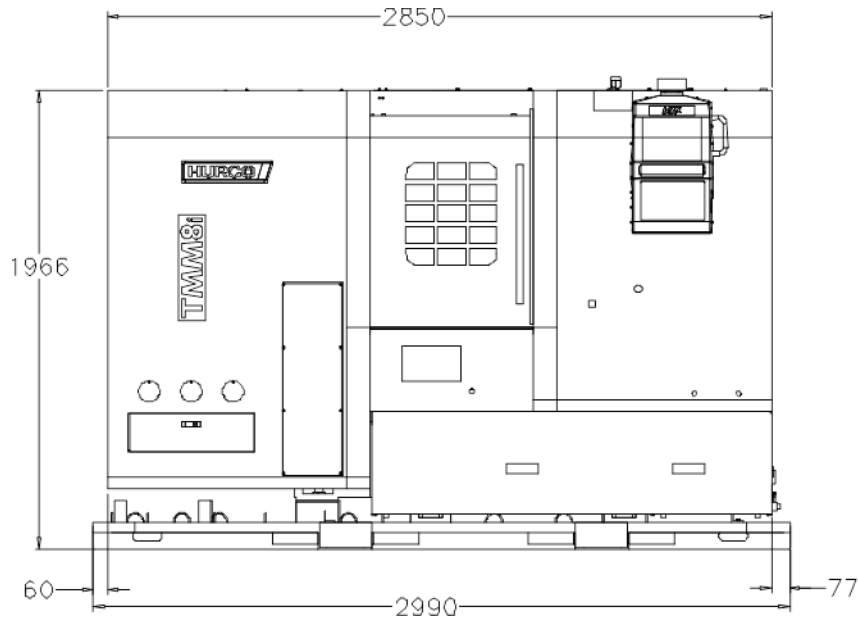
[Back To Content](#)

Working Conditions



[Back To Content](#)

Shipping Dimensions



[Back To Content](#)

Foundation Diagram

[Back To Content](#)



mind over metalSM

HURCO[®]