

CNC-Lathe with Living Tools

TMM12i



mind over metalSM

HURCO[®]

Key Data



	TMM 12i
Travels X / Z [mm]	305 / 1015
Max. Turning Diameter [mm]	360
Main Spindle [kW / Nm]	18 / 452
Spindle Speed [min ⁻¹]	2,800
Stations	12

Content

- [Technical Data](#)
- [Clearance Conditions](#)
- [Working Dimensions](#)
- [Shipping Dimensions](#)
- [Foundation Diagram](#)

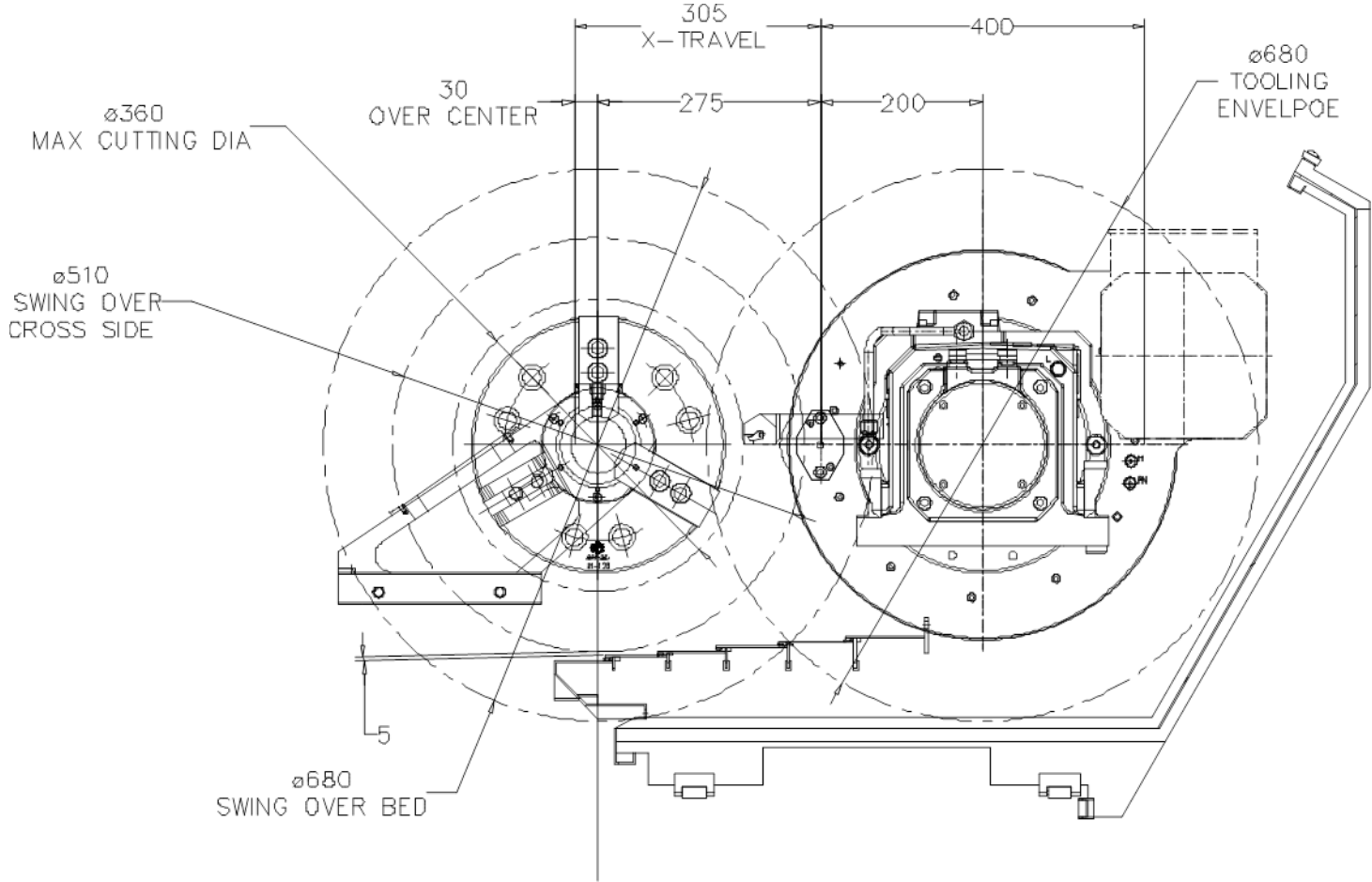
Technical Data

Machine Capacity		Feedrates	
Travels X / Z / [mm]	305 / 1015	Axis X / Z [m/min]	19 / 24
Max . Turning Diameter [mm]	360	Turret	
Max. Swing over Bed [mm]	680	Type	VDI 50
Cross Slide [mm]	510	Stations	12
Main Spindle		Max. Speed [min ⁻¹]	4.000
Spindle Nose	A2-11	Power max./continous [kW]	6,6 / 3,7
Max. Speed [min ⁻¹]	2,800	Torque max./continous [Nm]	42 / 24
Power max. / continous [kW]	18 / 11	Acceleration 0 - 4000 min ⁻¹ [sek]	0,12
Torque max / continous [Nm]	451 / 222	Deceleration 4000 – 0 min ⁻¹ [sek]	3,8
Max Bar Size [mm]	103	Index Time [sec]	0,45
Chuck Diameter [mm]	315	Max. Boring Bar Diameter [mm]	50
Acceleration 0 – 2,800 min ⁻¹ [sec]		Tool Shank Width [□ mm]	32
Deceleration 2,800 – 0 min ⁻¹ [sec]		Service Requirements/ Weight	
Accuracy (VDI / DGQ 3441)		Electrical	38 kVA / 55 A / 400V
Positioning P _{max} [mm]	0,01	Air (Dry, clean air acc. DIN/ISO 8573-1, class 4)	7bar / 150 l/min
Repeatability P _s [mm]	0,005	Weight [kg]	8.000

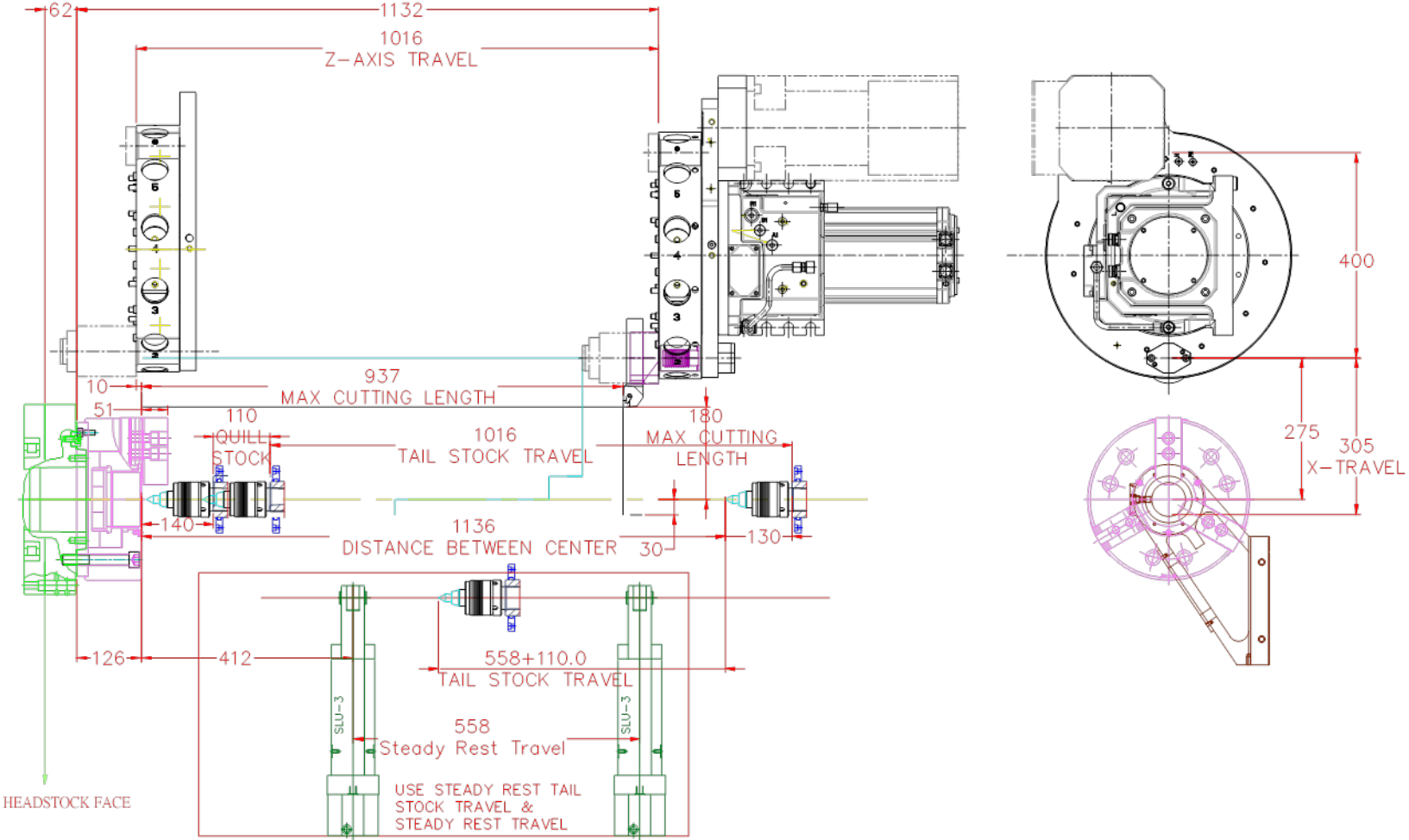
*due to the position of the mass center of the machine, for unloading by forklift it is recommended to plan with a higher carrying capacity of 30%

[Back To Content](#)

Clearance Conditions

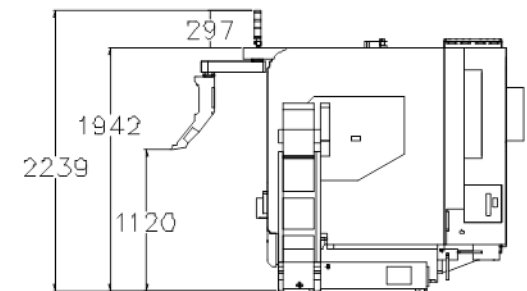
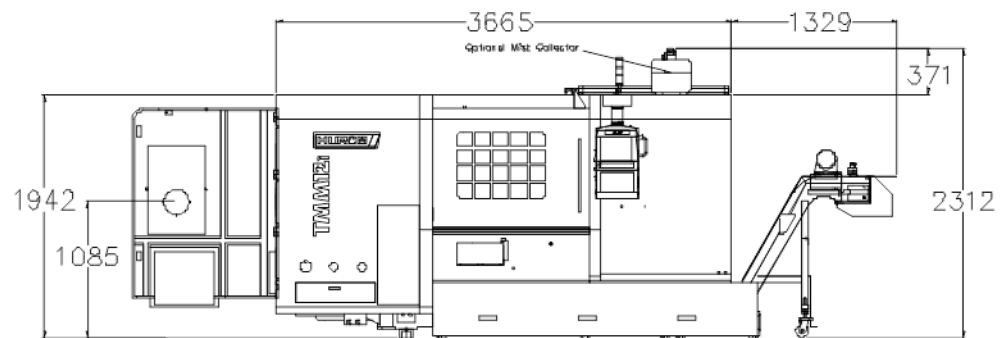
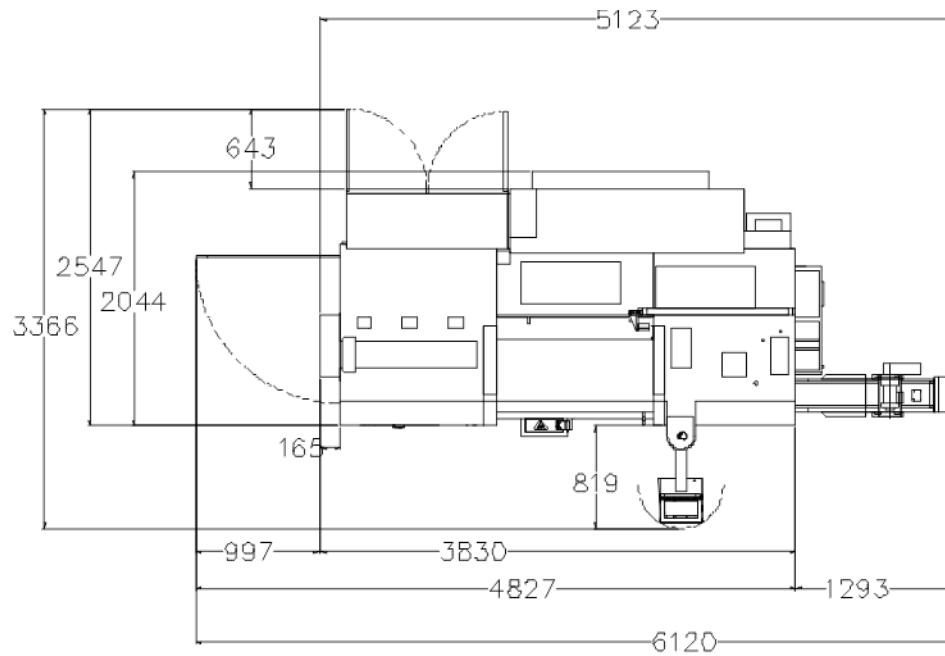


Clearance Conditions



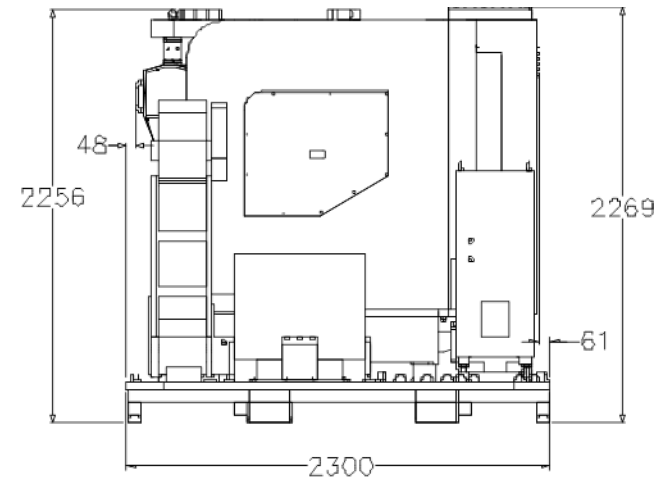
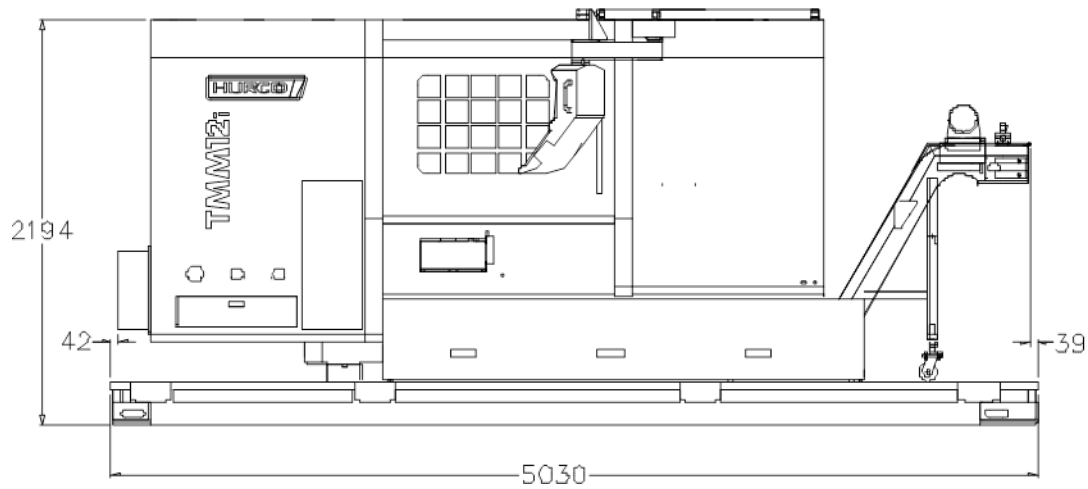
[Back To Content](#)

Working Conditions



[Back To Content](#)

Shipping Dimensions



[Back To Content](#)

Foundation Diagram

[Back To Content](#)



mind over metalSM

HURCO[®]