

CNC-Lathe with Living Tools

# TMM10i



mind over metal<sup>SM</sup>

**HURCO**<sup>®</sup>

# Key Data



	TMM 10i
Travels X / Z [mm]	250 / 750
Max. Turning Diameter [mm]	295
Main Spindle [kW / Nm]	18 / 474
Spindle Speed [min <sup>-1</sup> ]	3,000
Stations	12

# Content

- [Technical Data](#)
- [Clearance Conditions](#)
- [Working Dimensions](#)
- [Shipping Dimensions](#)
- [Foundation Diagram](#)

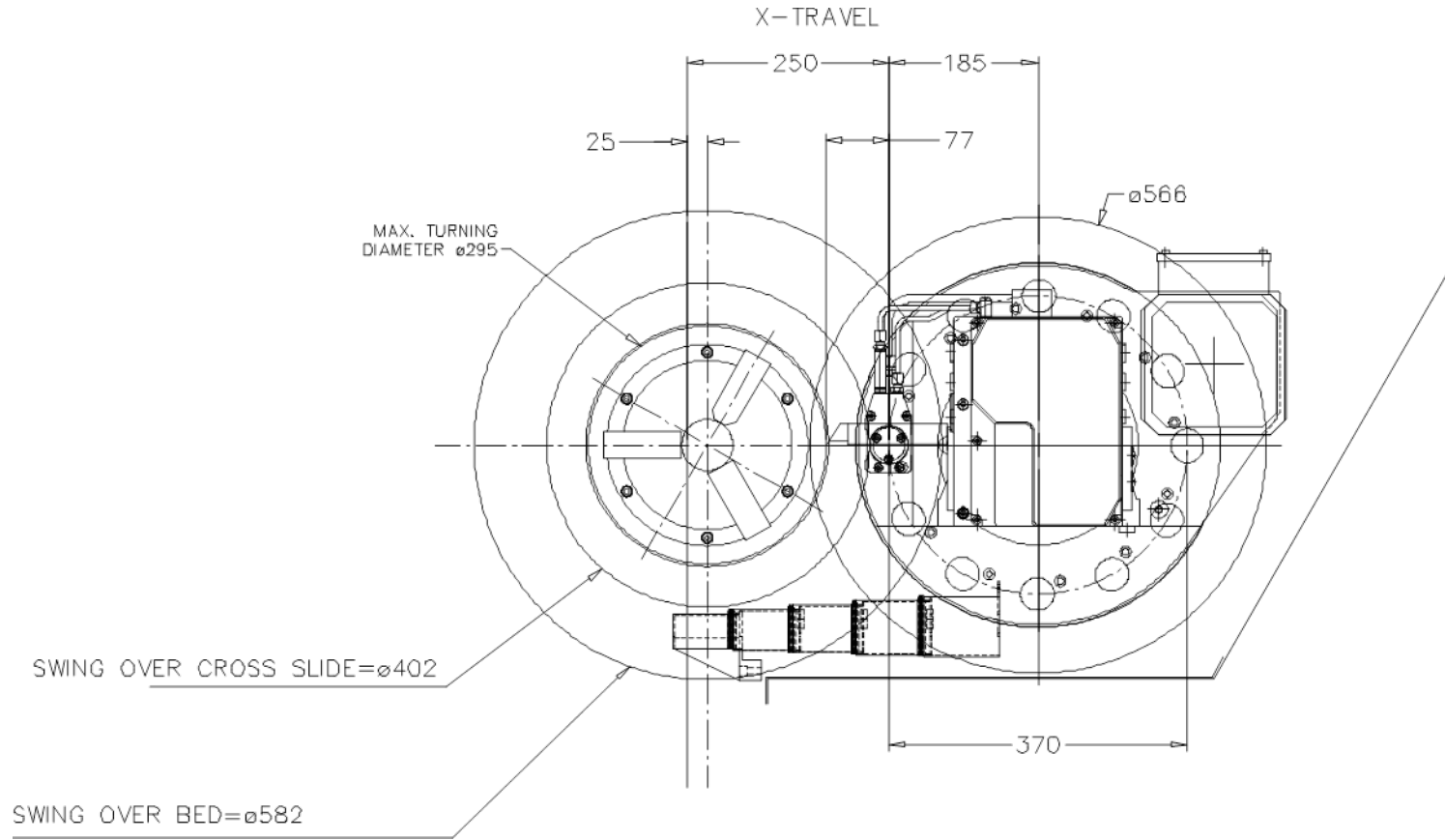
# Technical Data

Machine Capacity		Feedrates	
Travels X / Z / W / Y [mm]	250 / 750	Axis X / Z [m/min]	19 / 24
Max . Turning Diameter [mm]	295	Turret	
For full Y axis travel [mm]	580	Type	VDI 40
Max. Swing over Bed/Cross Slide [mm]	582 / 402	Stations	12
Main Spindle		Max. Speed [min <sup>-1</sup> ]	4,000
Spindle Nose	A2-8	Power max./continous [kW]	6.6 / 3.7
Max. Speed [min <sup>-1</sup> ]	3,000	Torque max./continous [Nm]	42 / 24
Power max. / continous [kW]	18 / 11	Acceleration 0 - 5000 min <sup>-1</sup> [sek]	0.12
Torque max / continous [Nm]	474 / 237	Deceleration 5000 – 0 min <sup>-1</sup> [sek]	3.8
Max Bar Size [mm]	77	Index Time [sec]	0.31
Chuck Diameter [mm]	250	Max. Boring Bar Diameter [mm]	40
Acceleration 0 – 3,500 min <sup>-1</sup> [sec]	5.8	Tool Shank Width [ □ mm]	25
Deceleration 3,500 – 0 min <sup>-1</sup> [sec]	4.1	Service Requirements/ Weight	
Collet Chuck (optional)	QCRL80	Electrical	38 kVA / 55 A / 400V
Accuracy (VDI / DGQ 3441)		Air (Dry, clean air acc. DIN/ISO 8573-1, class 4)	7bar / 150 l/min
Positioning P <sub>max</sub> [mm]	0.01	Weight [kg]	6,000
Repeatability P <sub>s</sub> [mm]	0.005		

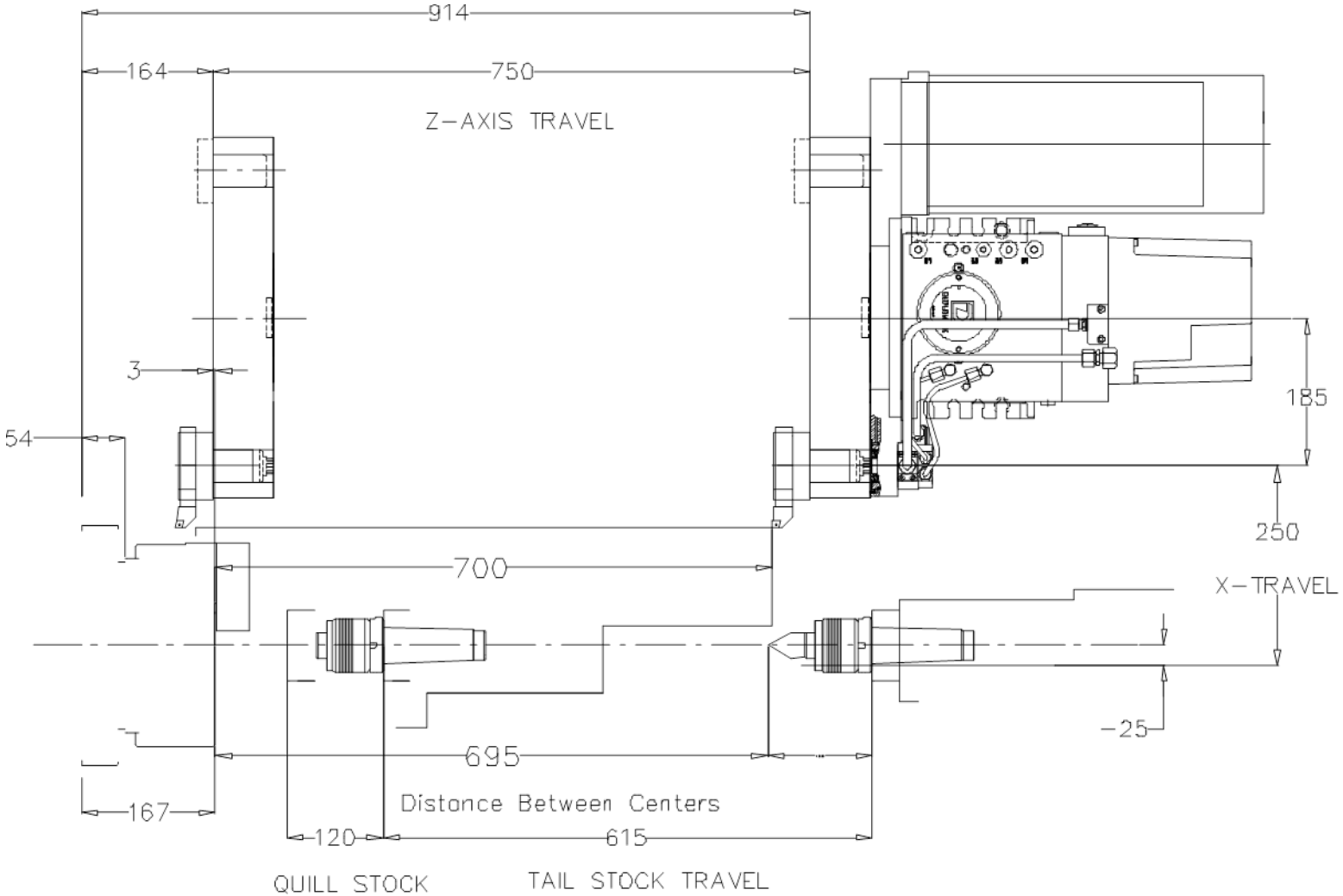
[Back To Content](#)

\*due to the position of the mass center of the machine, for unloading by forklift it is recommended to plan with a higher carrying capacity of 30%

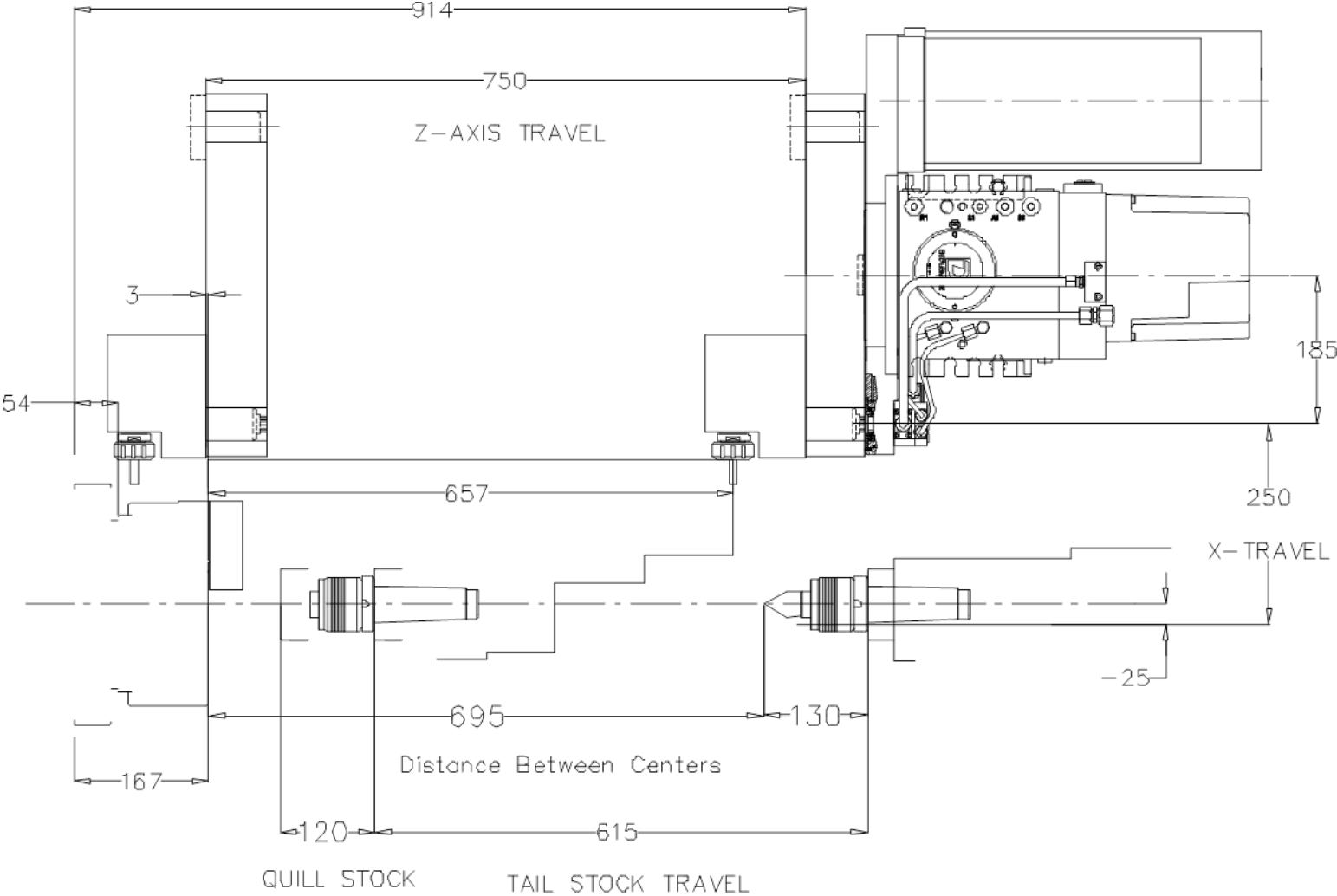
# Clearance Conditions



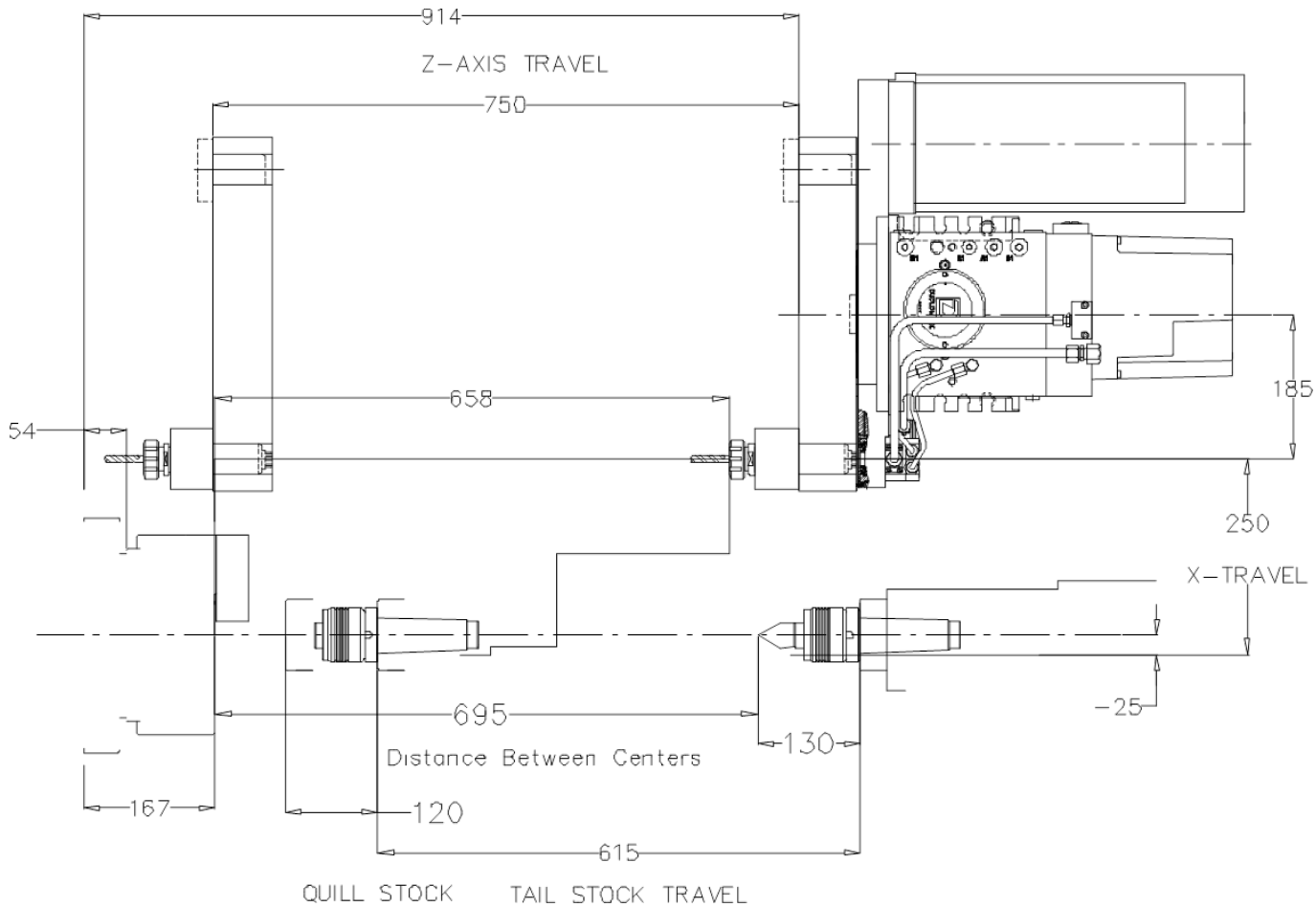
# Clearance Conditions



# Clearance Conditions



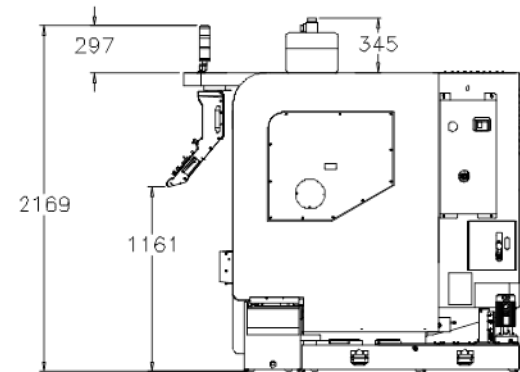
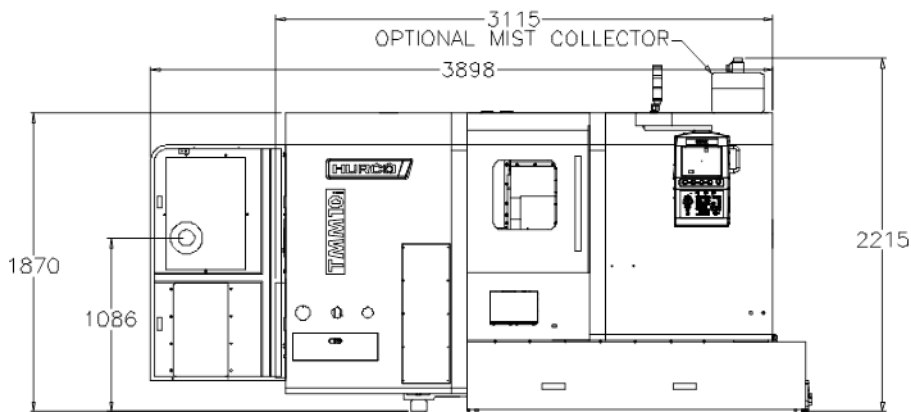
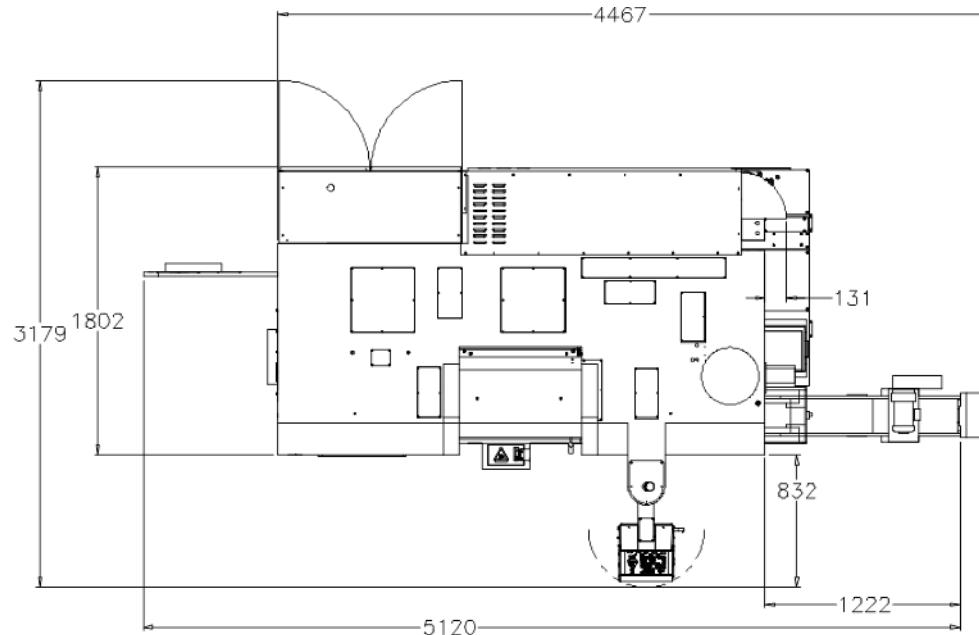
# Clearance Conditions



[Back To Content](#)

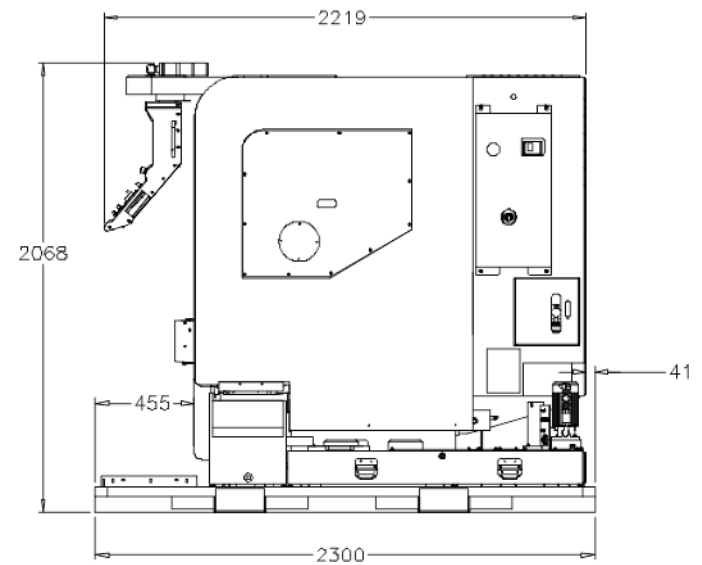
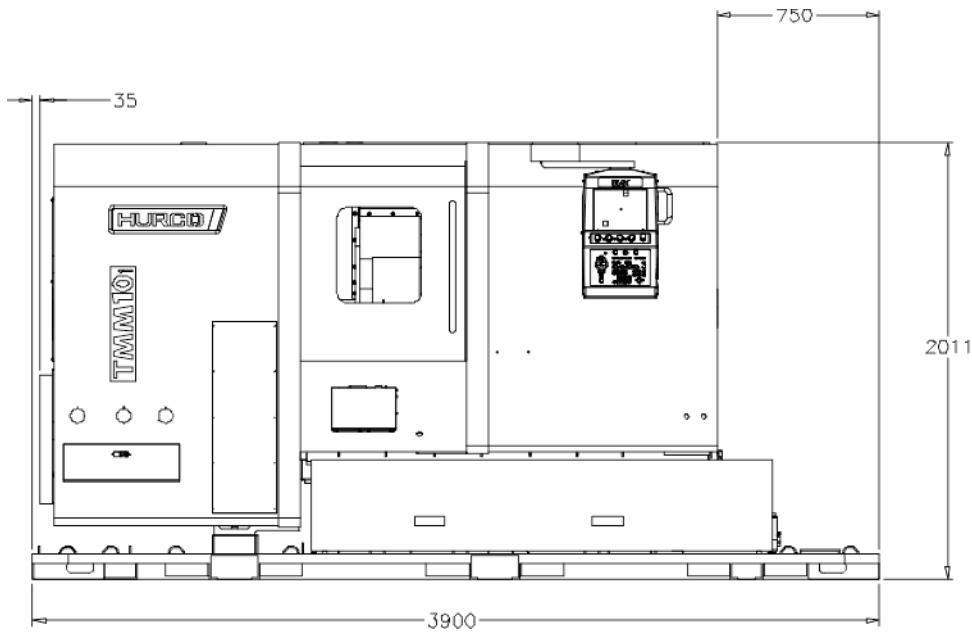


# Working Conditions



[Back To Content](#)

# Shipping Dimensions



[Back To Content](#)

# Foundation Diagram

[Back To Content](#)



mind over metal<sup>SM</sup>

**HURCO**®