

CNC 2-Axes Lathe

TM 12i



mind over metalSM

HURCO[®]

Key Data



	TM 12i
Travels X / Z [mm]	305 / 1015
Max. Turning Diameter [mm]	395
Main Spindle [kW / Nm]	55 / 604
Spindle Speed [min ⁻¹]	2,800
Stations	12

Content

- [Technical Data](#)
- [Clearance Conditions](#)
- [Working Dimensions](#)
- [Shipping Dimensions](#)
- [Foundation Diagram](#)

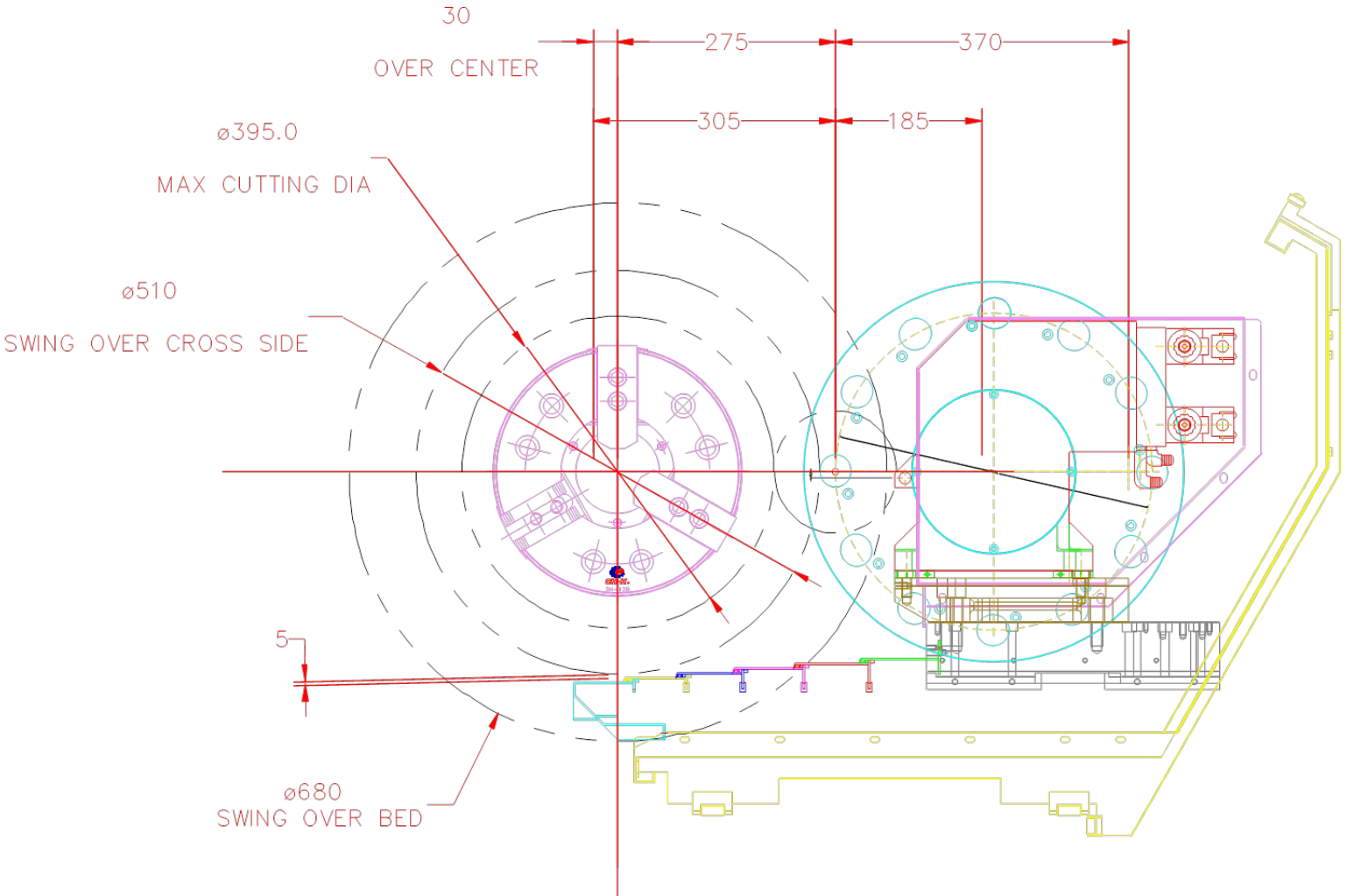
Technical Data

Machine Capacity		Accuracy (VDI / DGQ 3441)	
Travels X / Z [mm]	305 / 1015	Positioning P _{max} [mm]	0.01
Max . Turning Diameter [mm]	395	Repeatability P _s [mm]	0.005
Max. Swing over Bed [mm]	680	Feedrates	
Over Cross Slide [mm]	510	Axis X / Z [m/min]	19 / 24
Spindle		Turret	
Spindle Nose	A2-11	Type	VDI 40
Max. Speed [min ⁻¹]	2,800	Stations	12
Power max. / continous [kW]	55/ 30	Index Time [sec]	0.8
Torque max / continous [Nm]	604 / 329	Max. Boring Bar Diameter [mm]	40
Max Bar Size [mm]	103	Tool Shank Width [□ mm]	25
Chuck Diameter [mm]	305	Service Requirements/ Weight	
Acceleration 0 – 2,800 min ⁻¹ [sec]	6.0	Electrical	52 kVA / 75 A / 400V
Deceleration 2,800 – 0 min ⁻¹ [sec]	6.0	Air (Dry, clean air acc. DIN/ISO 8573-1, class 4)	7bar / 150 l/min
		Weight [kg]	8,000

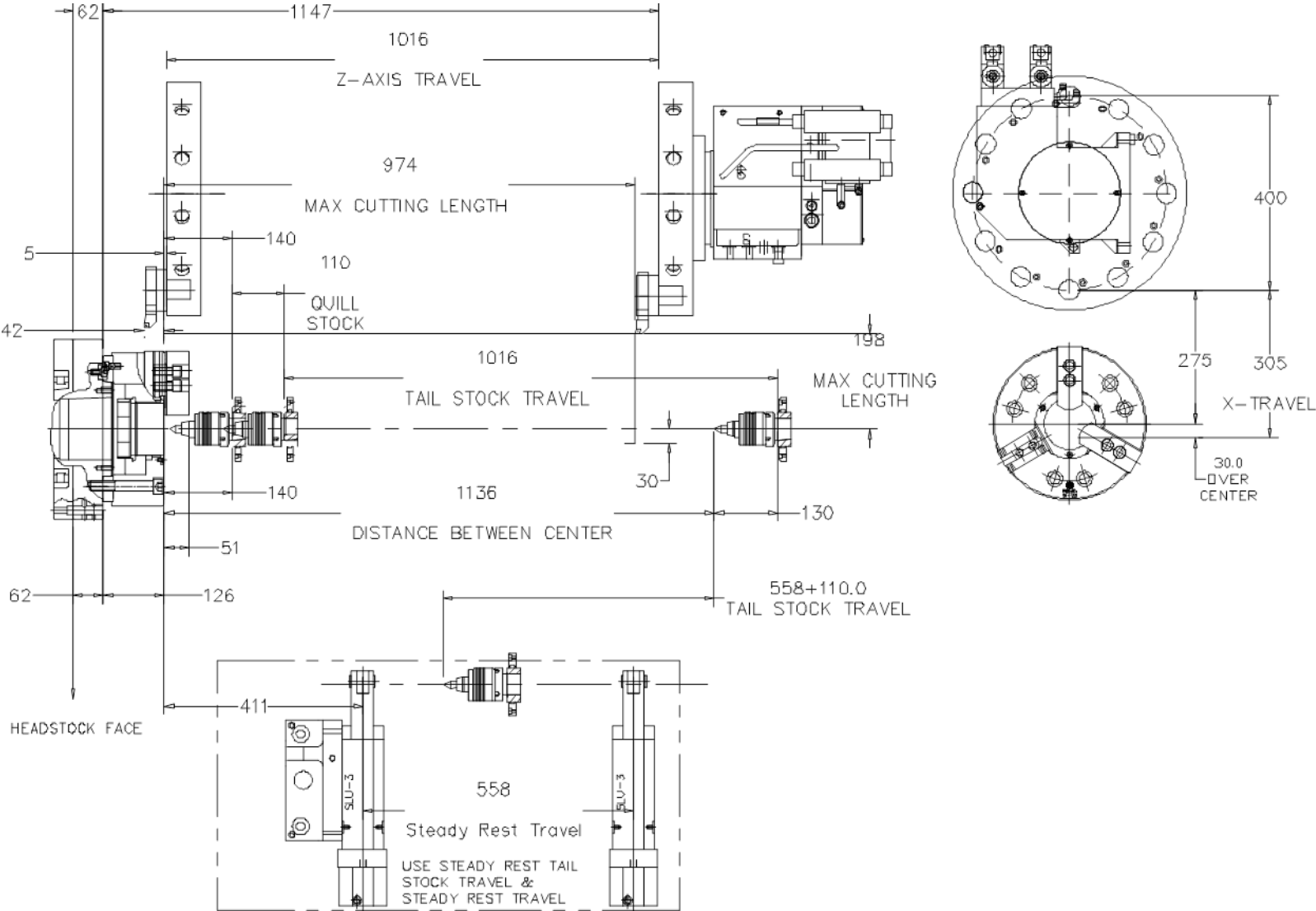
[Back To Content](#)

*due to the position of the mass center of the machine, for unloading by forklift it is recommended to plan with a higher carrying capacity of 30%

Clearance Conditions

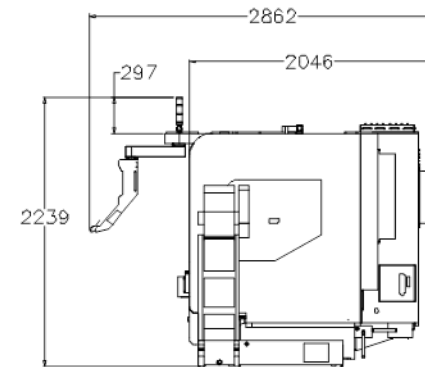
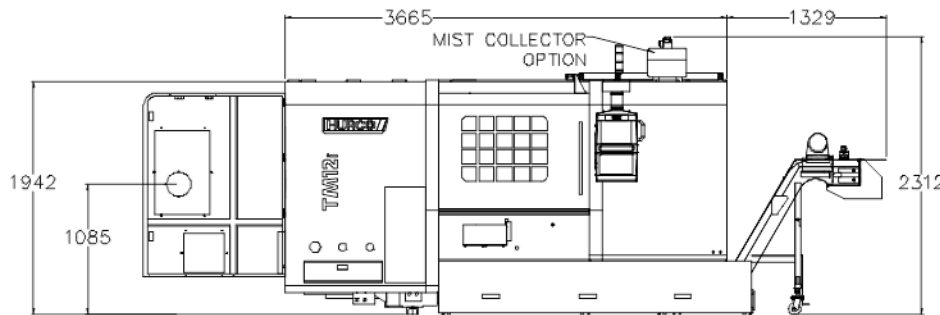
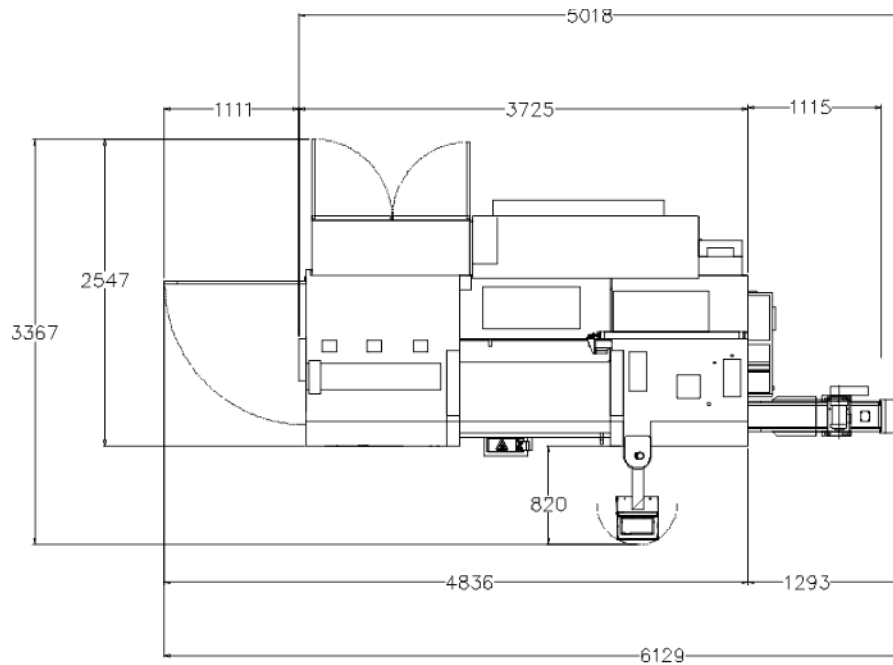


Clearance Conditions



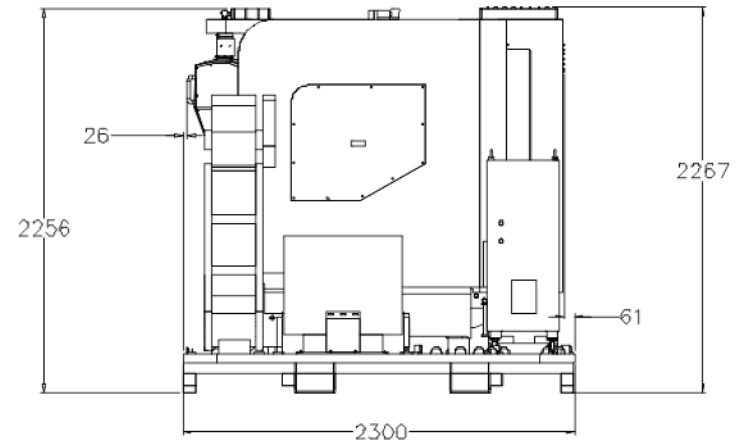
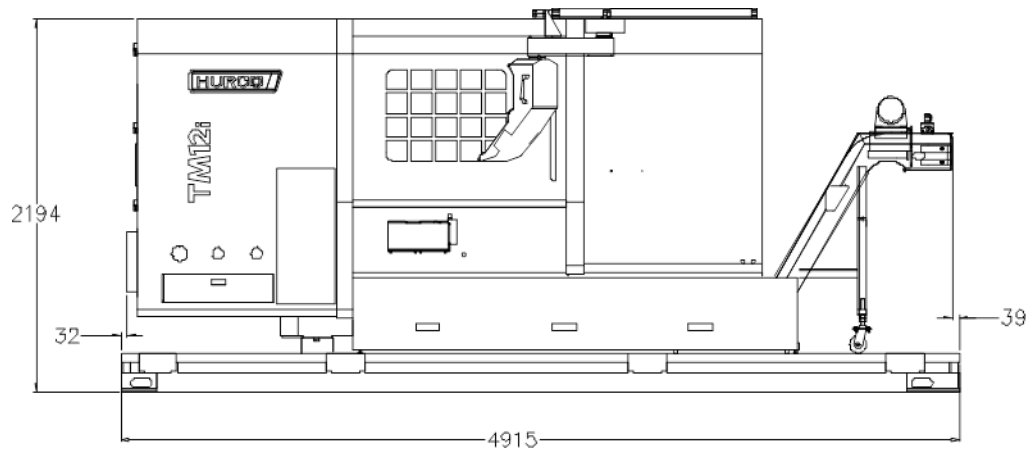
[Back To Content](#)

Working Conditions



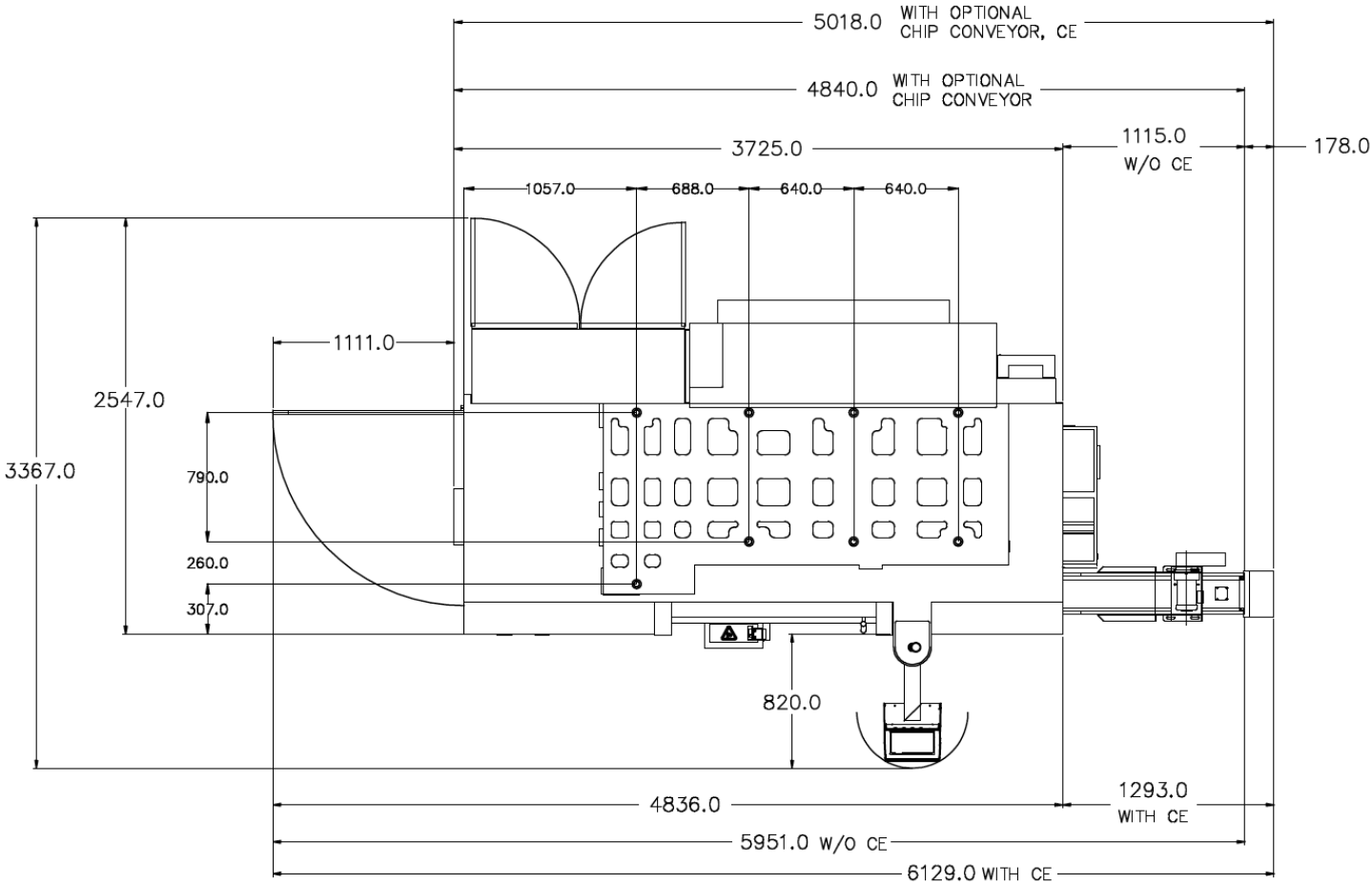
[Back To Content](#)

Shipping Dimensions



[Back To Content](#)

Foundation Diagram



[Back To Content](#)



mind over metalSM

HURCO[®]