

CNC 2-Axes Lathe

TM 10i



mind over metalSM

HURCO[®]

Key Data



	TM 10i
Travels X / Z [mm]	250 / 750
Max. Turning Diameter [mm]	295
Main Spindle [kW / Nm]	22 / 352
Spindle Speed [min ⁻¹]	3,000
Stations	12

Content

- [Technical Data](#)
- [Clearance Conditions](#)
- [Working Dimensions](#)
- [Shipping Dimensions](#)
- [Foundation Diagram](#)

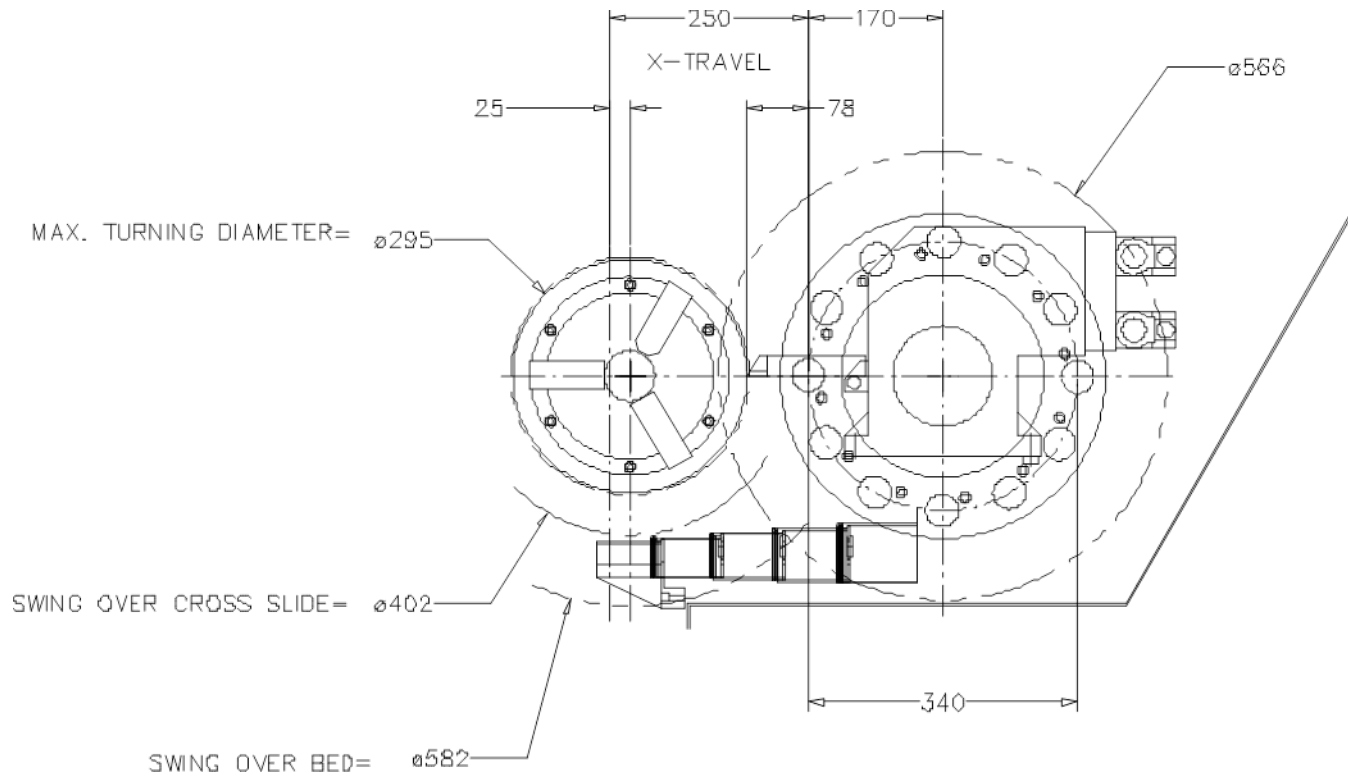
Technical Data

Machine Capacity		Accuracy (VDI / DGQ 3441)	
Travels X / Z [mm]	250 / 750	Positioning P _{max} [mm]	0.01
Max . Turning Diameter [mm]	295	Repeatability P _s [mm]	0.005
Max. Swing over Bed [mm]	580	Feedrates	
Over Cross Slide [mm]	400	Axis X / Z [m/min]	19 / 24
Spindle		Turret	
Spindle Nose	A2-8	Type	VDI 40
Max. Speed [min ⁻¹]	3,000	Stations	12
Power max. / continous [kW]	22 / 15	Index Time [sec]	0.5
Torque max / continous [Nm]	352 / 239	Max. Boring Bar Diameter [mm]	40
Max Bar Size [mm]	76	Tool Shank Width [□ mm]	25
Chuck Diameter [mm]	250	Service Requirements/ Weight	
Acceleration 0 – 3,000 min ⁻¹ [sec]	4.0	Electrical	28 kVA / 41 A / 400V
Deceleration 3,000 – 0 min ⁻¹ [sec]	5.0	Air (Dry, clean air acc. DIN/ISO 8573-1, class 4)	7bar / 150 l/min
Collet Type (optional)	QCRL80	Weight [kg]	5,500

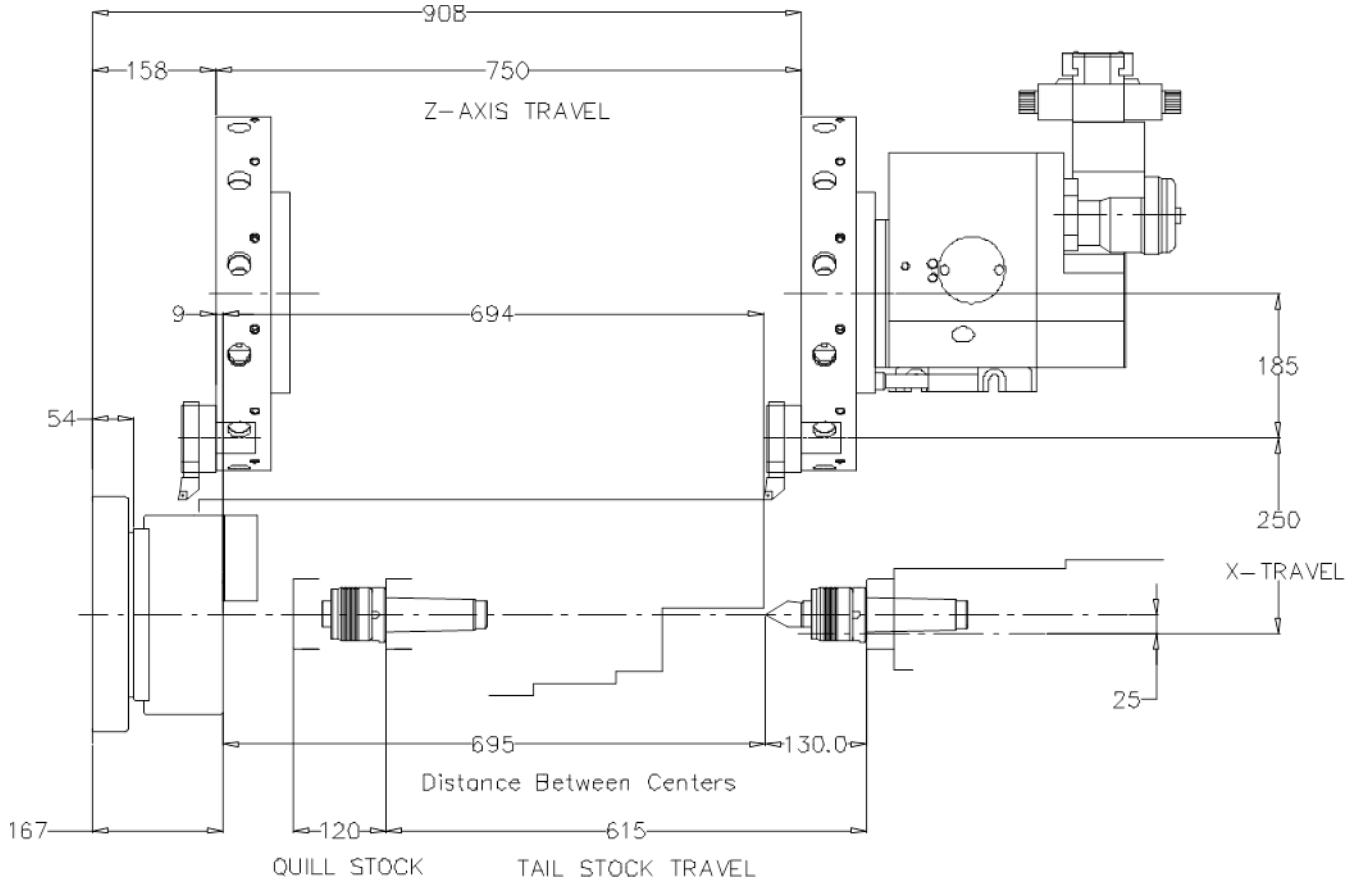
[Back To Content](#)

*due to the position of the mass center of the machine, for unloading by forklift it is recommended to plan with a higher carrying capacity of 30%

Clearance Conditions

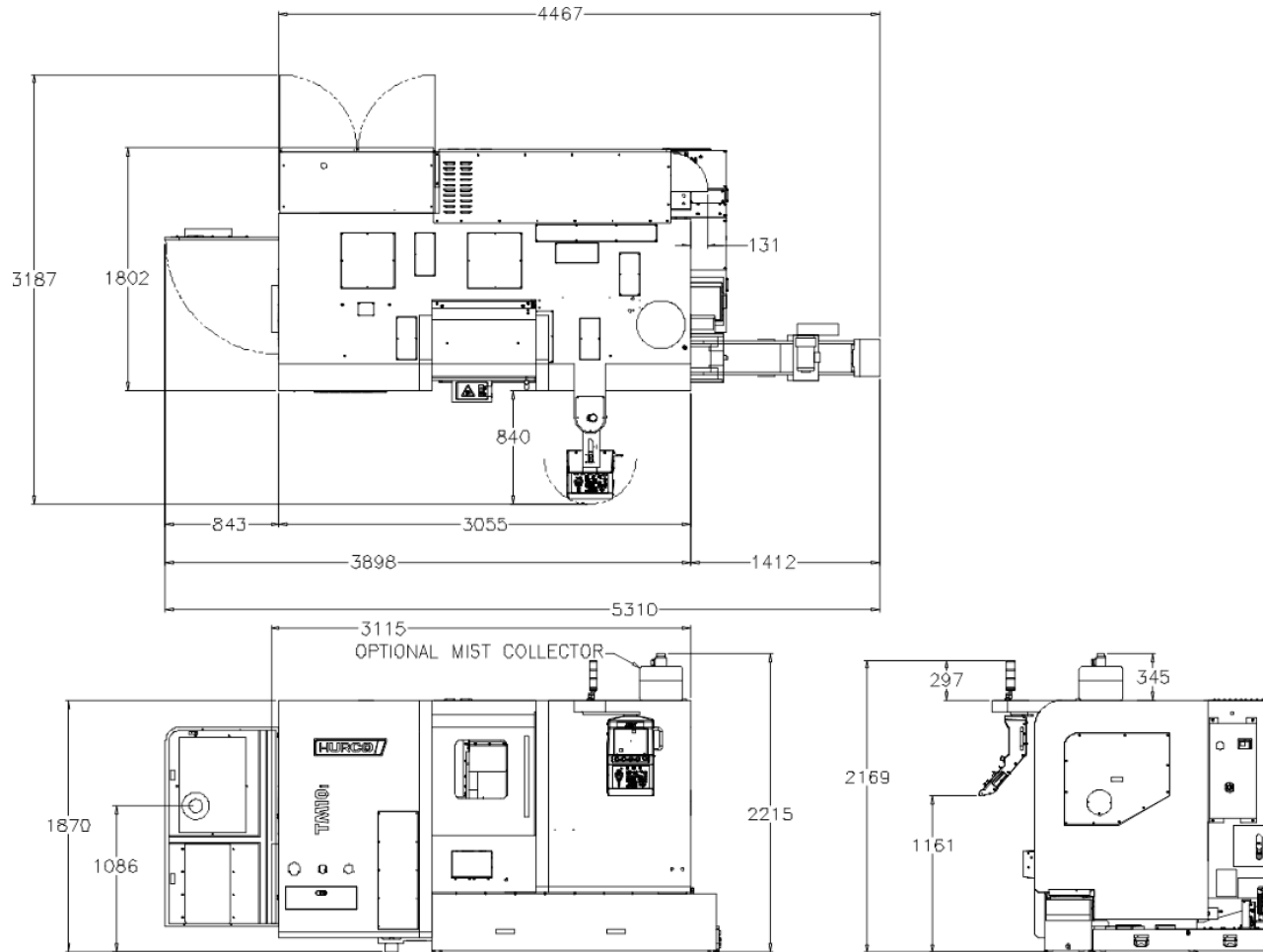


Clearance Conditions



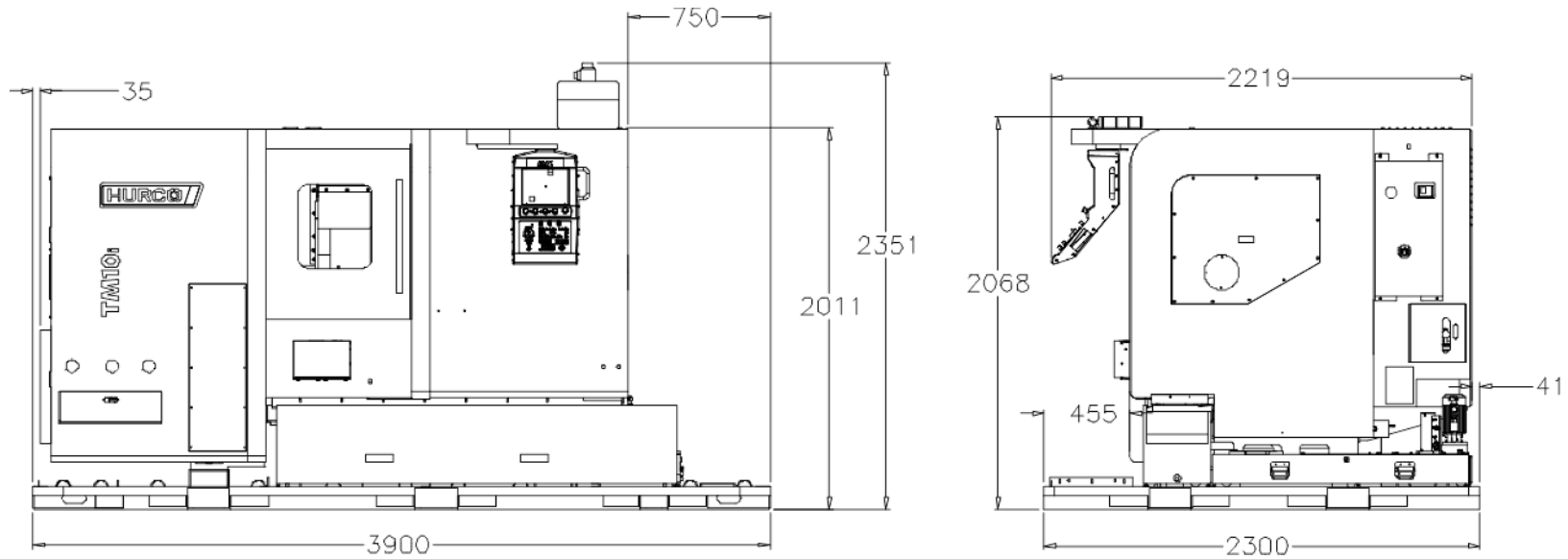
[Back To Content](#)

Working Conditions



[Back To Content](#)

Shipping Dimensions



[Back To Content](#)

Foundation Diagram

[Back To Content](#)



mind over metalSM

HURCO[®]